



TRADING AND CONTRACTING

ايتش دبليو اتش للتجارة والمقاولات

””

Table of Contents





Introduction	4
Mission, Vision, Values	6
HSE & Quality Policy	7
Services and Solutions	8
Organization Chart	9
Our Projects	10

A cityscape at sunset with a large white quotation mark overlaid on the image. The scene features several tall buildings, including a prominent one with a unique, stepped, white facade. A multi-level highway interchange is visible in the foreground, with a few cars on the roads. The sky is a mix of orange and grey, suggesting a hazy or overcast day. The overall mood is urban and modern.

Introduction ”

HWH Trading and Contracting is founded with a vision to share in the vastly growing construction industry in Qatar and be one of the leading contractors in Qatar and the region.

HWH is specialized in providing turn-key solutions in the construction industry, featuring design, engineering, and construction.

Client satisfaction has always been the ethos of HWH.

This is achieved by a combination of excellent service, quality of work, compliance with occupational health, safety and environment rules and regulations and providing a professional team that keeps excellent relationship with the clients.

Our reputation is owed to the dedication and vision of the top management and ensured by a team of highly qualified engineers, architects, and other specialists in the company's various departments.

HWH Trading and Contracting is the contracting arm for group of sister companies operating in the Qatari market.

The company caters in the field of Architectural Works, Civil works and Steel Structure fabrication and Erection.



TRADING AND CONTRACTING

ايتش دبليو اتش للتجارة والمقاولات

Mission

HWH is dedicated to providing value added general contracting services to its Clients via successful partnership with them throughout the whole construction process, and constant technological and professional improvement of its team.

Vision

Our vision is to maintain our growth as one of the leading contracting companies in the State of Qatar by delivering unique projects for exceptional clients and this in line with Qatar 2030 vision. In that regard, HWH is committed to deliver high end quality for landmark and distinguished projects.

Values

Leadership - Health & Safety - Entrepreneurial spirit - Superior Quality - Exceed expectations - Customer Focus - Accountability - Social Responsibility



COMPANY, HEALTH, SAFETY, ENVIRONMENTAL AND QUALITY POLICY

HWH Trading and Contracting W.L.L. is committed to maintaining high quality and safety standards, protecting and improving the working environment and ensuring health and safety in all our operations as well the welfare of all our staff. These requirements are shared with all employees who have responsibilities to assist them being achieved, in part by seeking continuous improvements, applying best practices and periodic management reviews of our joints policies and objectives to ensure they remain appropriate to our operations.

The Management of HWH hereby affirms their commitment through this integrated policy which will be achieved through the following guidelines.

Customer

- ❖ Completing Projects on time within budgets.
- ❖ Ensuring services consistently meet or exceed the needs and expectations of customers.
- ❖ Being flexible and accommodating towards customer and organizational needs.

Compliance

- ❖ Respecting and complying with Qatar Legislation, Customer requirements, ISO standards and all applicable contractual requirements.

Prevention and Improvement

- ❖ To prevent deviation from Customer requirements and Quality, Health, Safety and Environmental Standards.
- ❖ Protect the environment and from all forms of pollution.
- ❖ Prevent occupational injury and illness.
- ❖ Promote a culture of Team members working in a safe and healthy manner and who are conscientious towards quality performance.
- ❖ Continually improve the performance and effectiveness of the Integrated Management System, through lessons learned from our and other teams mistake.

Competence

- ❖ Ensure employees are educated, trained and assessed as being competent to enable high performance in professional roles.

GENERAL MANAGER



QATAR | TEL: +974 4040 9797 | FAX: +974 4040 9797

QUALITY POLICY STATEMENT

HWH Trading and Contracting W.L.L. recognizes the quality and completion on time are key indicators of its performance. "Getting it right for the first time" enhances the Company's reputation with its Clients and increases its competitiveness.

HWH Trading and Contracting W.L.L. aims to assure clients that all products and services rendered by the Company are to the required Quality and complies with customer's specified requirements, in all aspects.

The Company recognizes that in order to achieve sustainable satisfaction; it must achieve all that has been specified and completely fulfill its contractual obligations before seeking approval and acceptance. This shall be undertaken through planning and controlling the managerial and technical aspects of the work, and verifying that the outcome of the planning and control activities has been successful.

The Company also aims to achieve improved productivity, efficiency and quality by having an effective and properly managed quality system, which complies with ISO 9001: 2015.

Quality is everyone's business. All employees with HWH Trading and Contracting W.L.L. have a responsibility to observe the documented procedures and instructions at all times and propose changes to clients, thus projecting a company image that is innovative, cost effective and capable of adapting to meet future needs.

The Quality System Detailed in this manual has full support and authorization.

GENERAL MANAGER

A handwritten signature in black ink, appearing to be 'M. ...', written over the printed name 'GENERAL MANAGER'.



CR NO.: 135396 | P.O.BOX: 22801, DOHA - QATAR | TEL: +974 4040 9797 | FAX: +974 4040 9797

Services & Solutions



› Design & Project Development Department

- Architectural Design
- Interior Design
- Electrical Design
- Structural Design
- Mechanical Design

› Engineering Support & Pre/Post Contract Services Department

- Estimation & Tendering
- Quantity Surveying
- Planning

› Electrical Department

- Electronic Safety & Security
- Communications
- Lighting

› Mechanical Department

- Plumbing, Drainage & Fire Fighting
- HVAC Systems

› Civil Department

- Execution of Earthworks
- Structure Works (Reinforced Post-Tensioned, Concrete & Steel)
- Land & Building Surveying
- Finishing Works

› Project Controls & Planning Department

- HSE
- Quality Control
- Planning
- Cost Control
- Quality Assurance

› Construction Support Department

- Steel Workshop
- Aluminium Workshop
- Joinery Workshop
- Marble Workshop

› Site Services Department

- Site General Services & Manpower Control

› Logistics Department

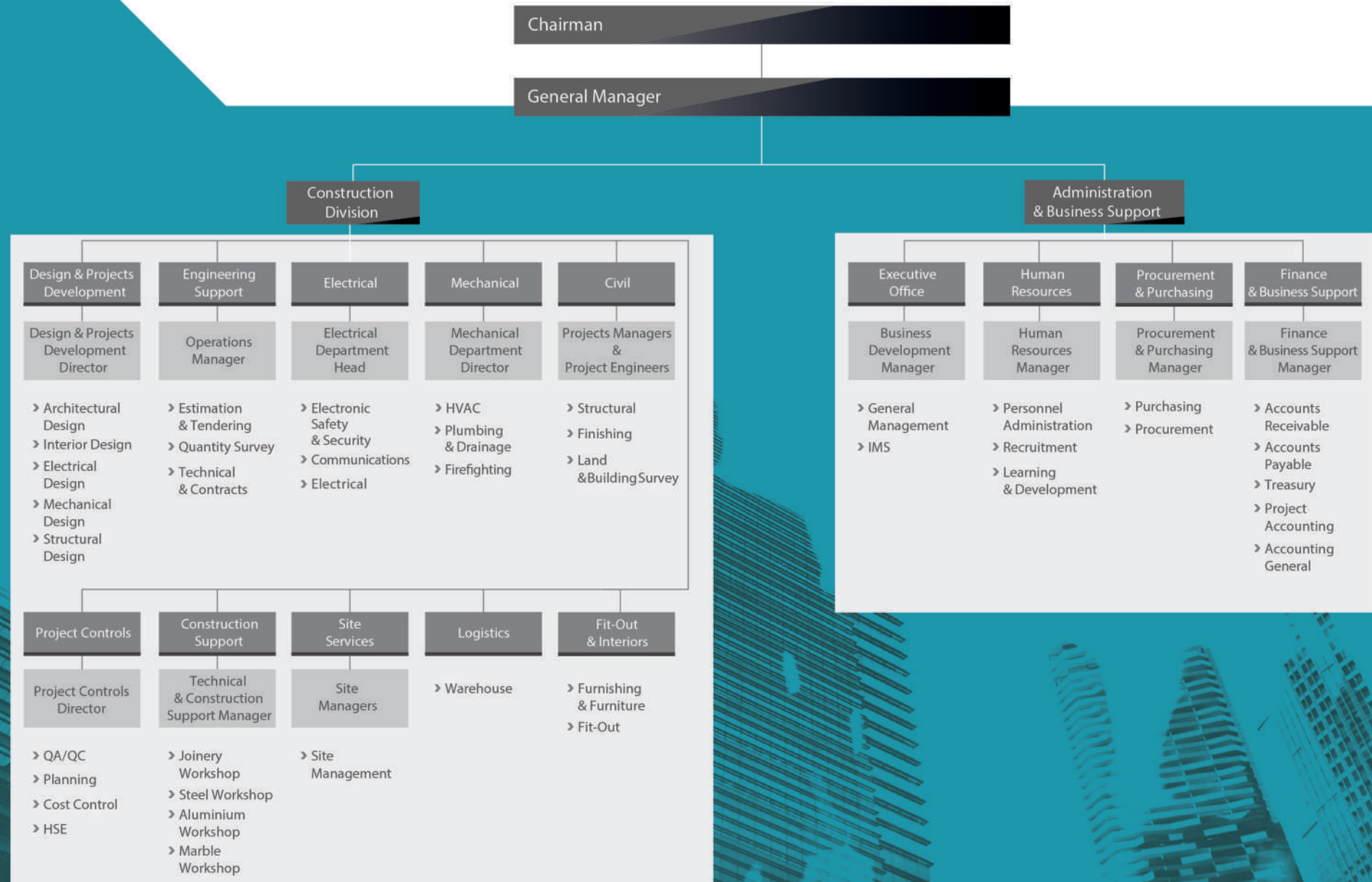
- Warehouse
- Garage
- Equipment
- Heavy Transportation
- Labor Transportation

› Fit-Out & Interiors

- Furnishing & Furniture
- Fit-Out Works



Organization Chart





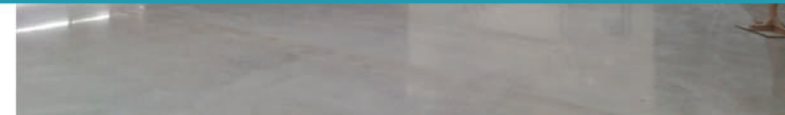
FIT-OUT PROJECTS

Interior – Ceiling- Partition

Our Projects



DOHA METRO Project



Our Projects



AL BAYT STADIUM

Our Projects



Waldorf Astoria - West Bay



Our Projects



Holiday Inn - Doha



Our Projects



BARWA TOWER OFFICES

Our Projects



AL AHLI HOSPITAL



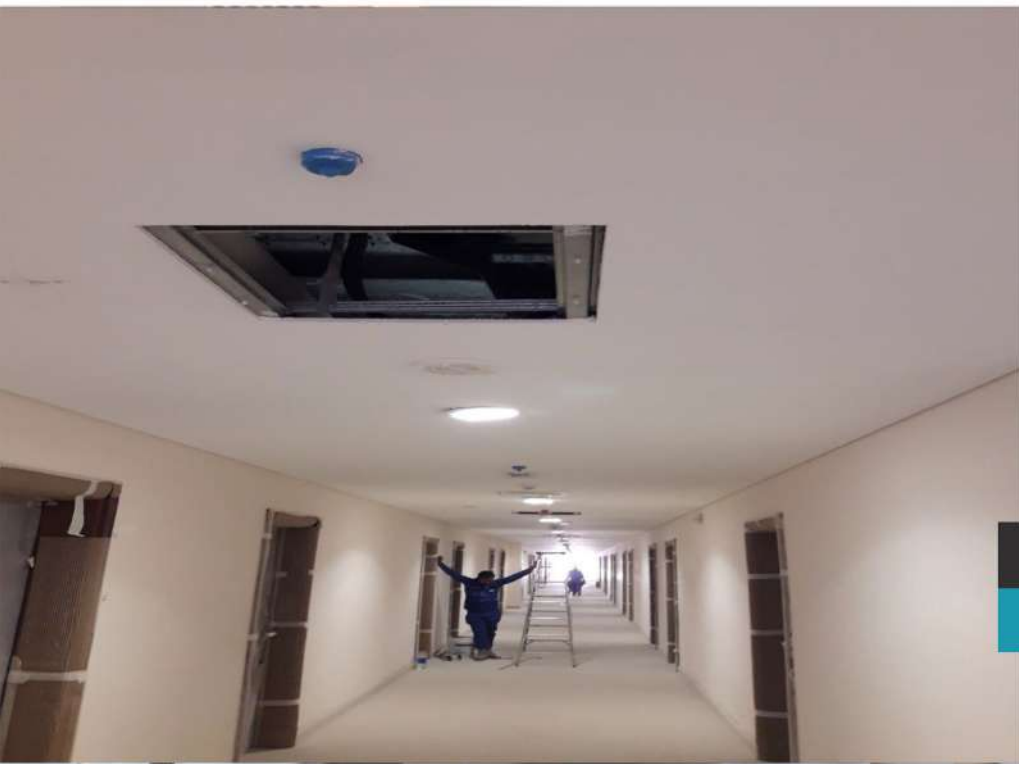
Our Projects



Milaha Warehouse Offices



Our Projects



New Emiri Navy Base

Our Projects



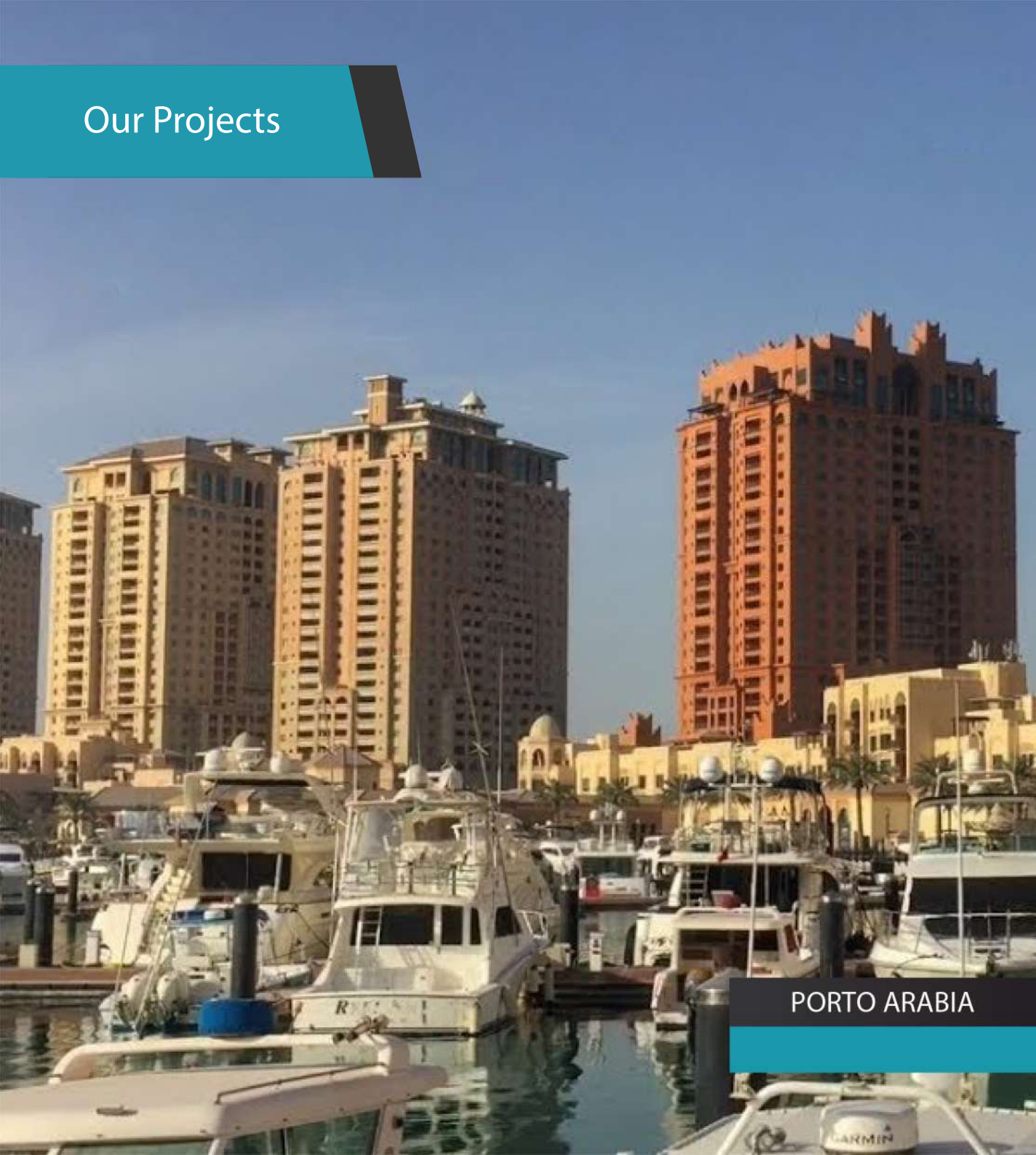
AL Jaber Labour Camp

Our Projects



Private Villas Pearl

Our Projects



PORTO ARABIA



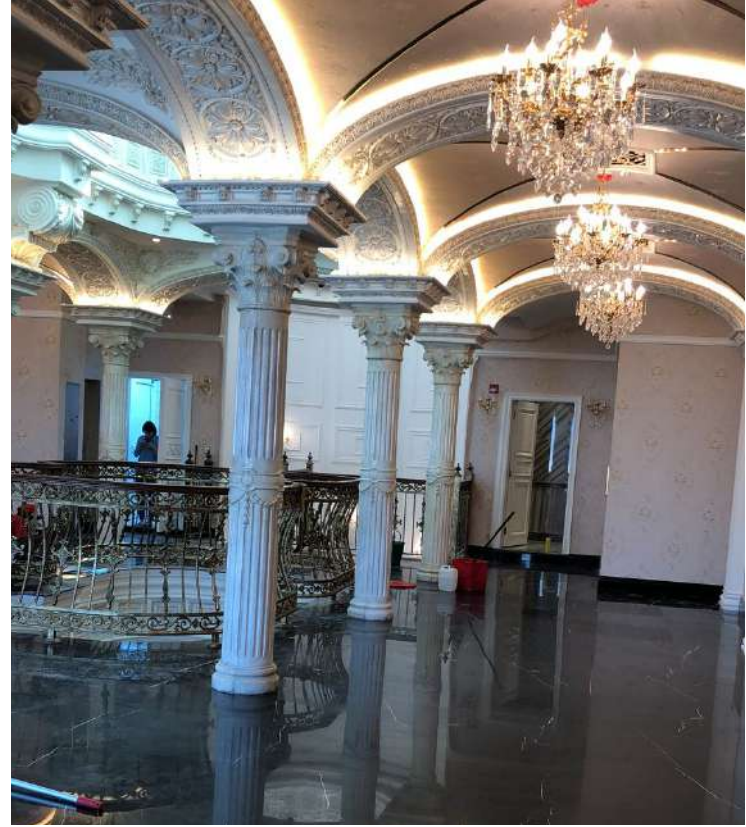
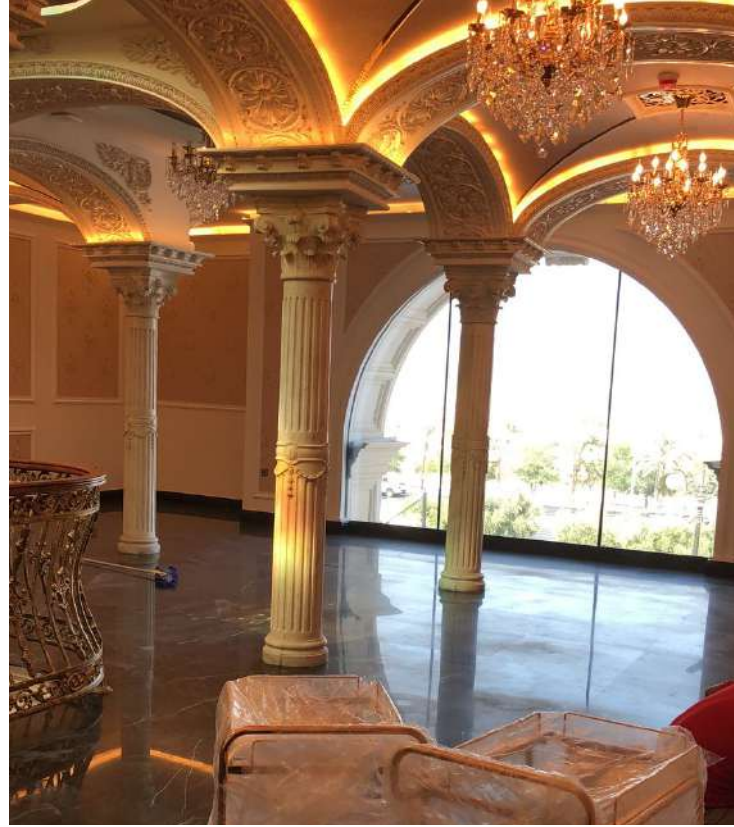
Our Projects



Cyclone Gym - MUSHERIB



Our Projects



BAB ALAMOUD Restaurant

Our Projects



SAJ BOUTIQUE Restaurant





INDUSTRIAL PROJECTS

Our Projects



BUILDING MATERIAL WAREHOUSE - BIRKAT AL AWAMER

Our Projects



QUANTO BELLO FACTORY AT NEW INDUSTRIAL AREA

Our Projects



STEEL REINFORCEMENT AT MEGA RESERVOIR PROJECT

Our Projects



DOHA HYDRAULIC FACTORY

Our Projects



D-Clad Factory / New Industrial Area

Our Projects



Multi-Purpose Stores, Showroom, Administration & Accommodation

Our Projects



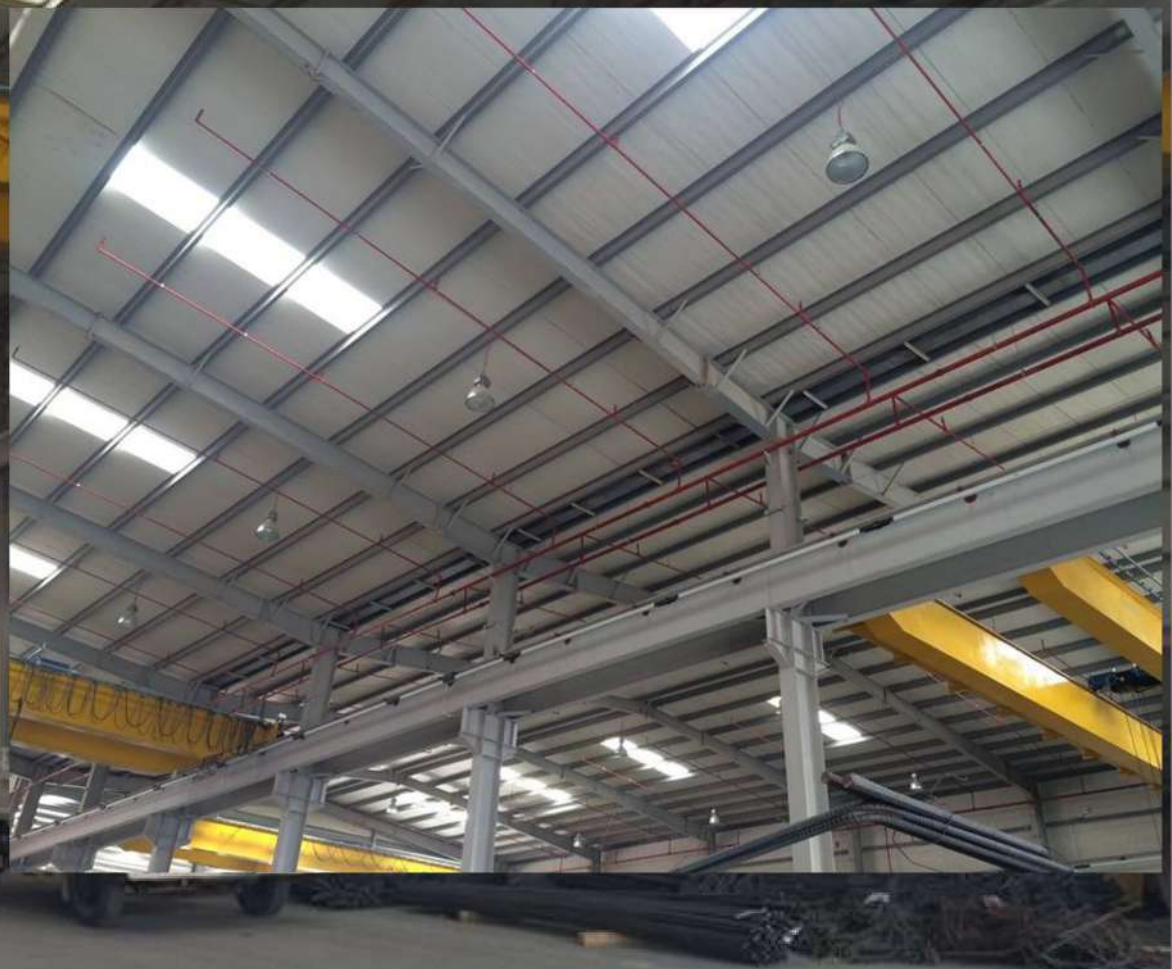
Transportation Store Type 1 - (G) and Type 2 - (G+M), Office Building (G+1) & Labor Accommodation (G+2)

Our Projects



Proposed Office Building (G+1) + Plastic Factory Building (G) + GH

Our Projects



ERF Factory- Civil & Electrical Works

Our Projects



Construction, Completion and Maintenance of Substations at various Locations



Our Projects



Friendly Food Qatar- Multi Purpose Stores, Showroom, Administration and Accomodation

Our Projects



Building Material Warehouse

A low-angle, upward-looking photograph of several tall skyscrapers in a city. The buildings are rendered in a light, desaturated color palette, creating a sense of height and scale. The sky is a pale, hazy blue with soft, wispy clouds. The word "VILLAS" is overlaid in the center in a bold, teal-colored, sans-serif font.

VILLAS

Our Projects



VILLA COMPLEX AT UMM SALAL

Our Projects



Private Beach Villa



Our Projects



BAHRI VILLAS- PEARL QATAR

Our Projects



Construction of 2 Palaces at AL WAJBA





CIVIL PROJECTS

Our Projects

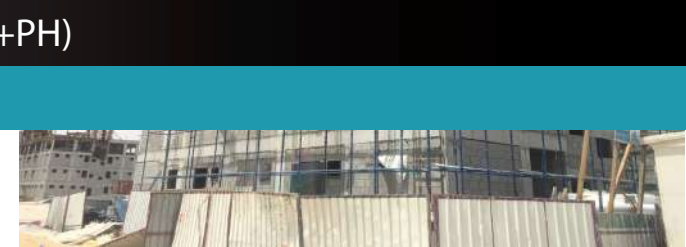


Labor Accommodation

Our Projects



Labor Accommodation (G+3+PH)



Our Projects



Labor Accommodation 2 Buildings (G+3)



Our Projects



Officers Club Building



HWH

TRADING AND CONTRACTING

ايتش دبليو اتش للتجارة والمقاولات